



COMMONWEALTH OF KENTUCKY
TRANSPORTATION CABINET

www.transportation.ky.gov/

Andy Beshear
GOVERNOR

Jim Gray
SECRETARY

September 15, 2022

CALL NO. 402
CONTRACT ID NO. 224204
ADDENDUM # 1

Subject: OLDHAM-SHELBY COUNTIES, 121GR22T025-FD04 & FD05
Letting September 22, 2022

(1) Revised - Detail Sheet - Page 298 of 327

Proposal revisions are available at <http://transportation.ky.gov/Construction-Procurement/>.

If you have any questions, please contact us at 502-564-3500.

Sincerely,

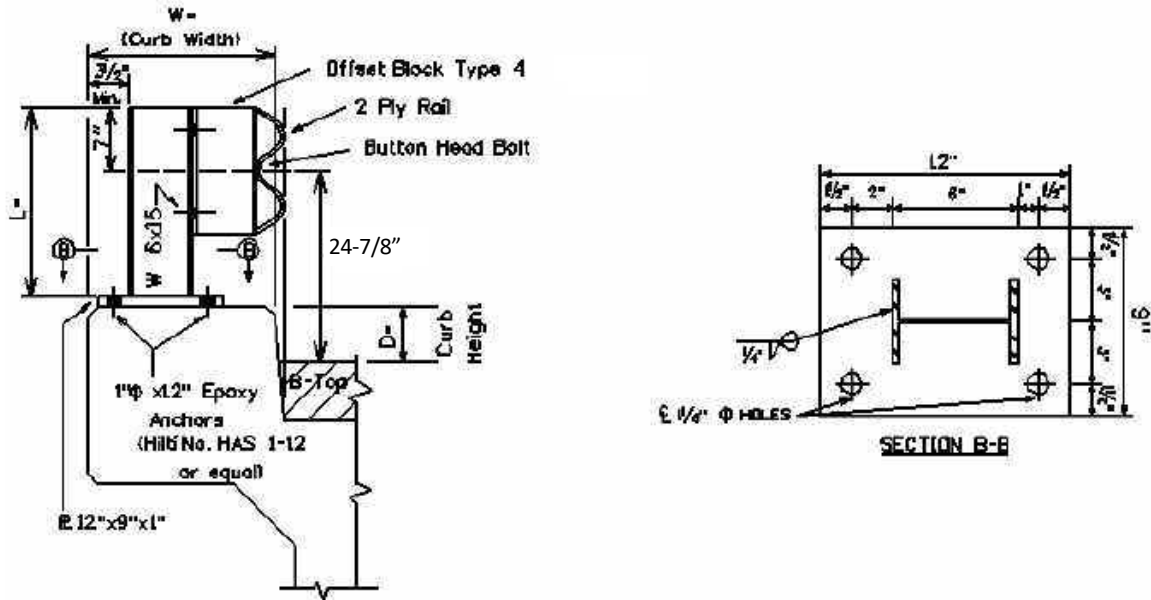
Rachel Mills,

A handwritten signature in black ink that reads "Rachel Mills".

Rachel Mills, P.E.
Director
Division of Construction Procurement

RM:mr
Enclosures

**GUARDRAIL ON BRIDGE, CASE II
 GUARDRAIL ON TOP OF BRIDGE CURB**



Bridge MP	D =	W =	L =	No. Posts	LF of 2 PLY Rail
1.914 (Oldham)	6"	12"	2'-1"	44	300

L = Length of Guardrail Post

D = Curb Height

W = Width of Bridge Curb

Warrants: When guardrail can be bolted to the top of the bridge curb and the curb width is 12 inches or greater, remove existing concrete and/or guardrail bridge rail and use Case II Bridge Guardrail.

NOTES:

1. If the clear distance between the faces of the guardrail for the Case II guardrail is less than 22 feet, delete the offset block.
2. When Case II Guardrail is used without the offset block, use a Precast Concrete Bridge Block at the ends of the bridge which face opposing traffic. See detail drawing for Precast Concrete Bridge Block.